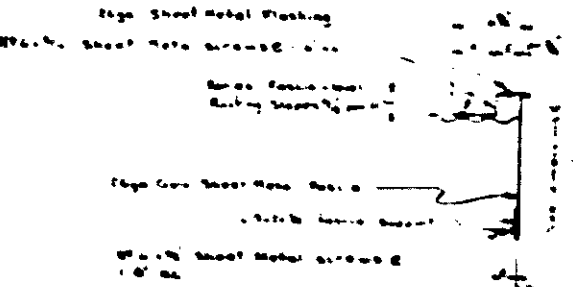
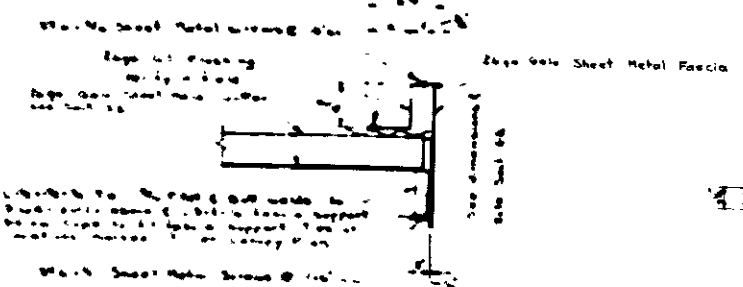


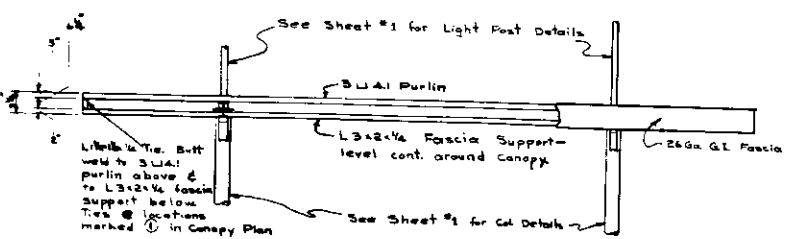
SECTION 1-1
SCALE - 1/2" = 1'



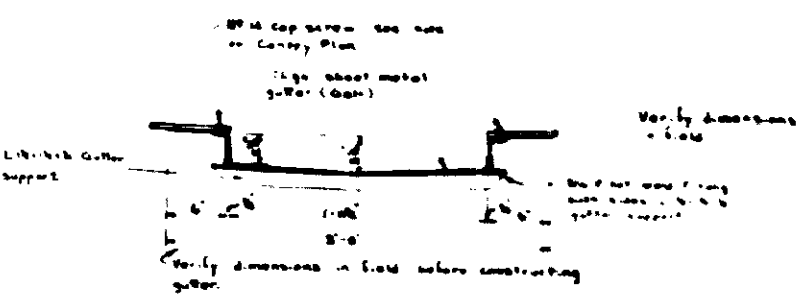
SECTION 2-2
SCALE - 1/2" = 1'



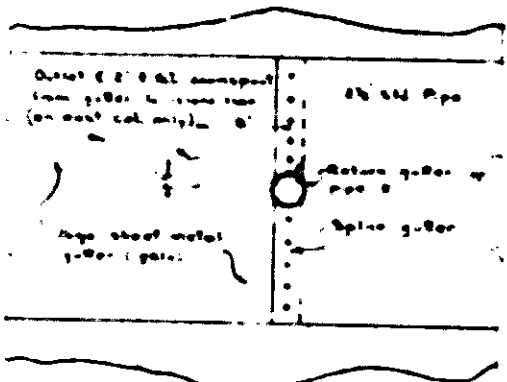
SECTION 3-3
SCALE - 1/2" = 1'



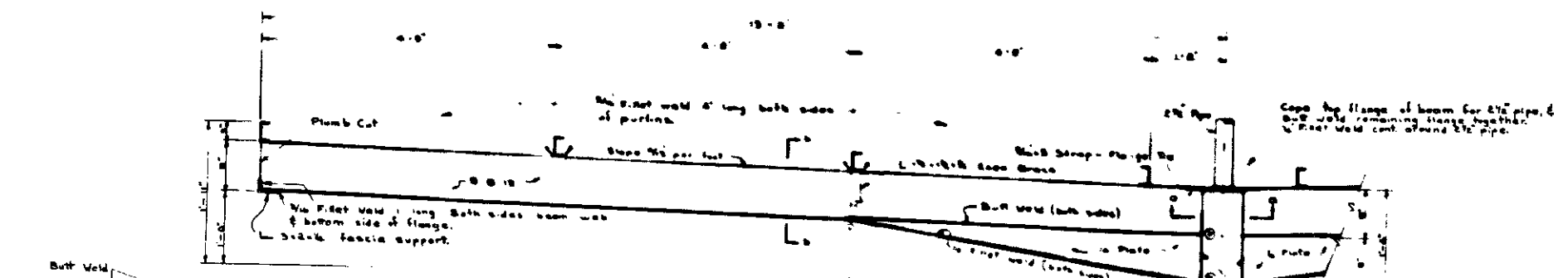
TYPICAL NORTH OR SOUTH CANOPY ELEVATION
SCALE - 1/2" = 1'



SECTION 4-4
SCALE - 1/2" = 1'

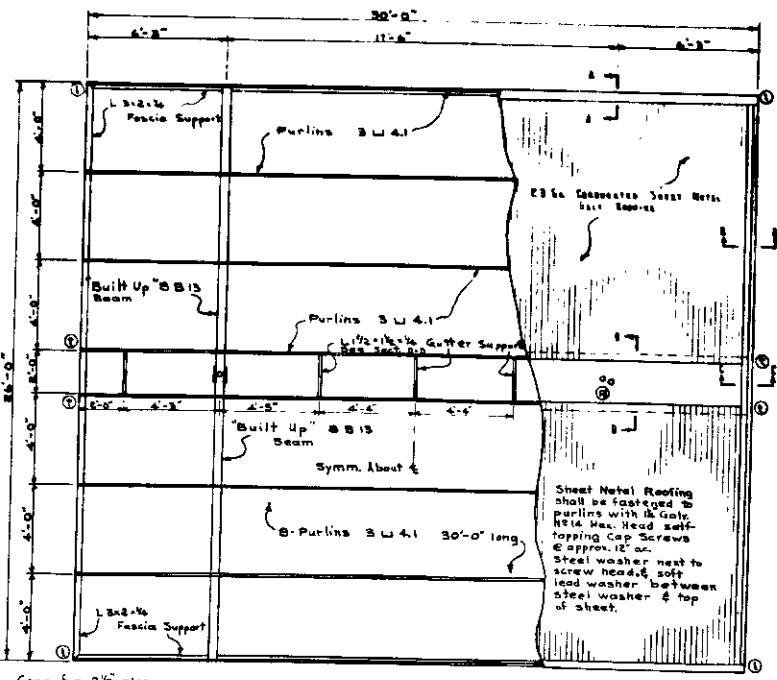


DETAIL of 5
SCALE - 1/2" = 1'



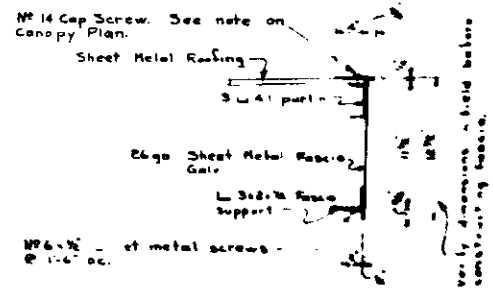
BEAM DETAIL
SCALE - 1/2" = 1'

NOTE
In constructing the "built up" section of 8" x 8" beam the following procedure shall be used:
1) The lower flange shall be flame cut from beam web from 3" to 6" from of 8" x 8" section. The 8" x 8" plate shall be the same material as beam - A36, A572, etc.
2) Electrodes used shall conform to requirements of AWS specifications & shall be suitable for prestressing & other conditions of intended use.
3) The built up section shall be applied from 3" to 6" simultaneously welding both sides. Minimum space between 1/2" plate & web shall be 1/2". So, weld shall be completed before fillet weld is started.
4) Fillet weld shall be applied from 3" to 6" both sides shall be welded simultaneously. Maximum space between 1/2" plate & flange shall be 1/2".
5) Welds connecting "built up" beam to 6" std. pipe shall proceed from the top (tension side) to the bottom (compression side).

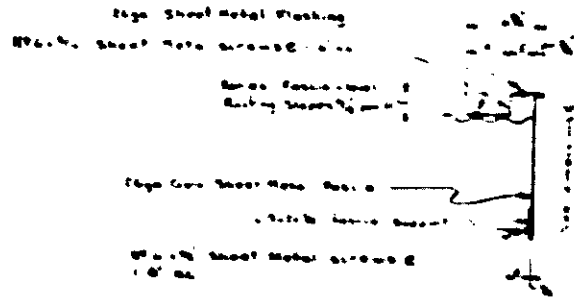


STRUCTURAL CANOPY PLAN
SCALE - 1/4" = 1'

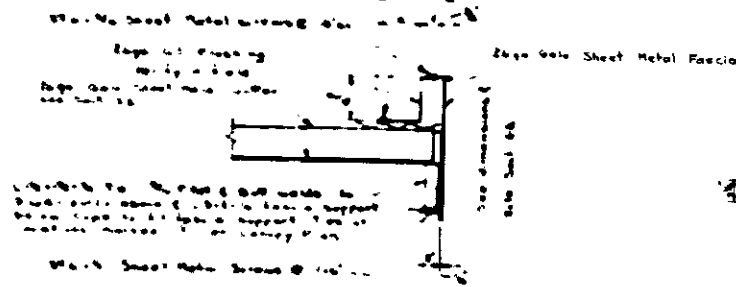
All welding shall be done in conformity with the provisions of the Uniform Building Code Standard ST-B section 4.



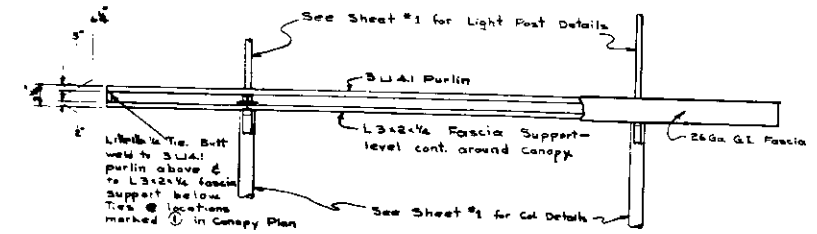
SECTION 1-1
SCALE - 1/4" = 1'



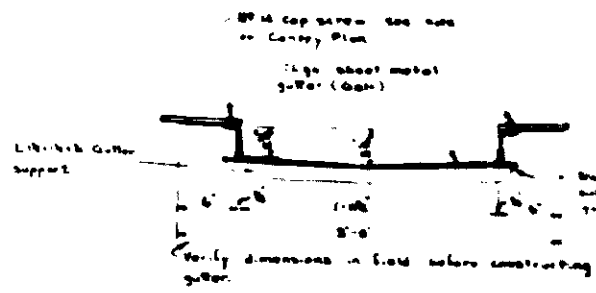
SECTION 2-2
SCALE - 1/4" = 1'



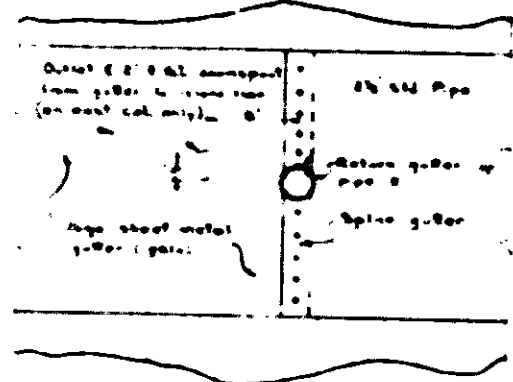
SECTION 3-3
SCALE - 1/4" = 1'



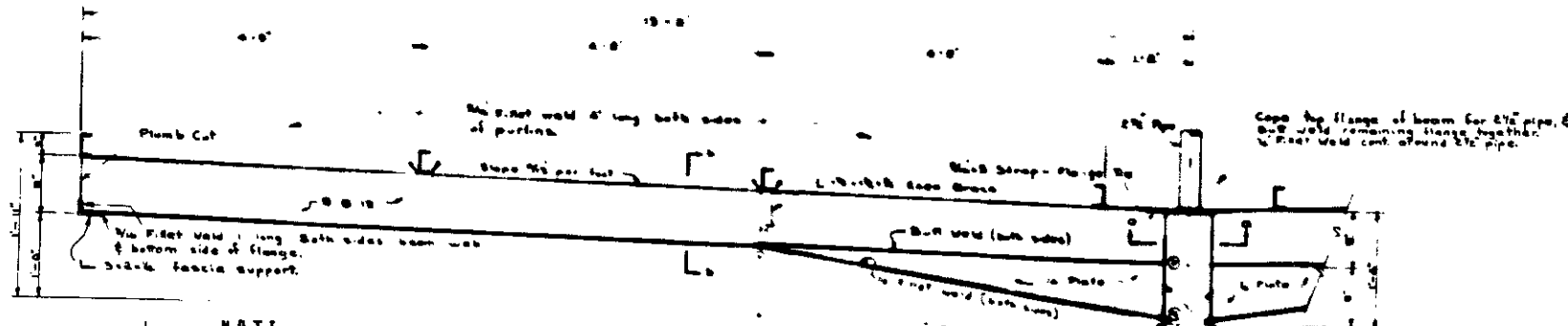
TYPICAL NORTH OR SOUTH CANOPY ELEVATION
SCALE - 1/4" = 1'



SECTION 4-4
SCALE - 1/4" = 1'

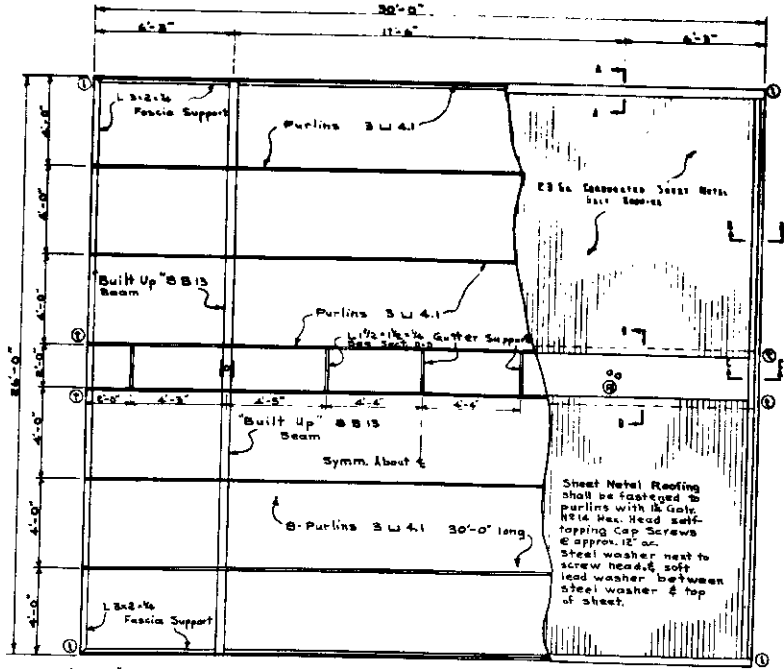


DETAIL of 2
SCALE - 1/4" = 1'



BEAM DETAIL
SCALE - 1/4" = 1'

NOTE
In constructing the "built up" section of 2x4 beam the following procedure shall be used:
1) The lower flange shall be flame cut from beam web from 2" to 4" from of 2" as shown. The 2x4 pipe shall be the same material as beam - ASTM A36.
2) Electrodes used shall conform to requirements of AWS specifications & shall be suitable for prestressing & other conditions of intended use.
3) The built up 2x4 shall be applied from 2" to 4" simultaneously welding both sides. Minimum space between 2x4 pipe & web shall be 1/2". So, weld shall be completed before fillet weld is started.
4) Fillet weld 1/4" shall be applied from 2" to 4" both sides shall be welded simultaneously. Maximum space between 2x4 pipe & flange shall be 1/2".
5) Welds connecting "built up" beam to 2x4 pipe shall proceed from the top (tension side) to the bottom (compression side).



STRUCTURAL CANOPY PLAN
SCALE - 1/4" = 1'

All welding shall be done in conformity with the provisions of the Uniform Building Code Standard ST-B section 4.